

ICSA 6689

Автоматичен дозатор за течен сапун



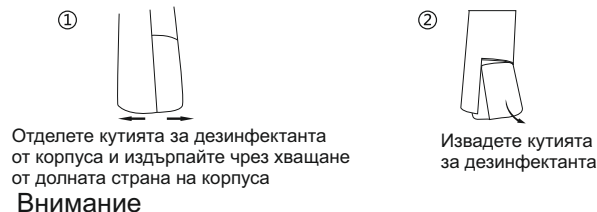
Inter Ceram
Водата заслужава си



Монтаж



Смяна на дезинфектанта



1. Не потапяйте и не изплаквайте с вода, за да предотвратите късо съединение
2. Когато наливате дезинфектант, наклонете бутилката.
3. Не използвайте течност без пяна, за да не се повреди дозаторът.
4. Да се монтира далече от пряка слънчева светлина

Отстраняване на проблеми

Грешка	Причина	Решение
Не може да се включи	Грешка при поставяне на батериите	Проверете батериите
Индикатора не е включен	Дозаторът не е включен Грешка при поставяне на батериите	Включете го Проверете батериите
Няма балончета	Дезинфектанта е свършил Батериите са изтощени	Сипете дезинфектант Сменете батериите
Червената светлина трепти бързо	Черната индукционна област е замърсена с пяна	Изключете, почистете и рестартирайте

Характеристики

Модел	6689
Материал	ABS
Напрежение	5V
Батерии	No.5 alkaline battery
Работна температура	5°C~40°C
Влажност	0%-85%RH

Употреба

- ① Натиснете бутона за включване
- ② Препоръчително е да миете ръцете си, когато те са мокри
- ③ Доближете ръката си до сензора
- ④ Препоръчително е да разтърквате целите си ръце
- ⑤ Измийте си ръцете с чиста вода и ги подсушете

Състояние	Indicator display
Стартиране	Бяла светлина за 1,5сек
Изключване	Червената светлина трепти
Слаби батерии	3 сек червена светлина

Поддръжка и обслужване

1. Ако има замърсяване вътре в контейнерчето, първо го почистете, преди да налеете сапун
2. Не използвайте вода. За почистване отвън, използвайте влажна кърпа; За почистване на кутията за батерии - използвайте суха кърпа.
3. Ако не използвате дозатора, моля премахнете сапуна, поставете вода и няколко пъти изпомпайте, за прочистване на механизмите. Извадете и батериите.

ICSA 6689

Automatic induction foam washing mobile phone set instructions

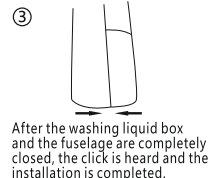
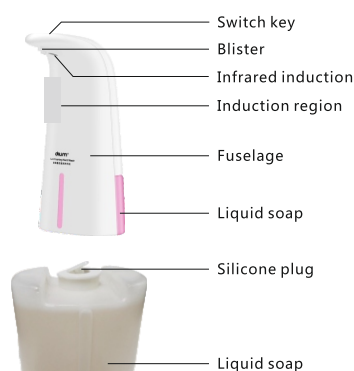


Inter Ceram
Begama zao. yonaka. m

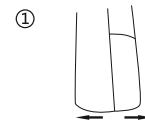


Product introduction Please read the instructions carefully before using the product and keep them properly.

Install



Change hand sanitizer



Separate the hand sanitizer box from the body, and pull out the hand sanitizer box by grasping the bottom of the body

Matters needing attention

1. Do not immerse the product in water or rinse it directly with water in order to avoid short circuit.
2. When installing or replacing hand sanitizer, incline the bottle body. If there is a small amount of liquid out of the normal phenomenon, wipe clean can still be used normally.
3. do not use non foam hand washing liquid to replace, so as not to cause machine failure.
4. Store the product in a cool place to avoid direct sunlight or close to the heat source.

Troubleshooting table

Fault phenomena	Causes of failure	Resolvent
Unable to switch on and off	Error in installation of positive and negative electrodes of batteries	Reloading Battery
The indicator is not on	The product is not on Error in installation of positive and negative electrodes of batteries	Turn on correctly Reloading Battery
No bubble	Hand sanitizer has been exhausted Dead battery	Replacement of hand sanitizer Replacement of new batteries
Red light flickers fast	Black induction area is blocked by foam.	Shut down, wipe induction area and restart

Basic parameters

Product Name	Didame Autowash Mobile Phone
Product Model	DTM-003
Main Material	ABS
Rated voltage	5V==
Battery type	No.5 alkaline battery
Working temperature	5°C~40°C
Working humidity	0%-85%RH

Use

- ① Touch the switch button and turn on the Ditim automatic mobile phone wash.
- ② It is recommended to wash your hands until they are wet.
- ③ Reach to the induction area, you can get rich foam, the bubble time is 0.25 seconds.
- ④ It is recommended to rub your hands fully.
- ⑤ Wash your hands with clean water and dry them.

Tips: When the mobile phone is not working, it will automatically enter the standby state without manual shutdown.

State	Indicator display
Boot up	White light on for 1.5 seconds
Shutdown	The red light flickers out
Low battery	3 seconds red light after induction

* In the boot state, the switch can be turned off by touching the switch key.

MADE IN CHINA

Maintenance and service

Regular maintenance of machines is of great help to the lifespan of the machine, ensuring that the foam ejected from the machine is always in perfect condition. Because all washing products are sticky, in order to prevent the machine pipeline from blocking due to the solidification of hand sanitizer, timely maintenance is required under the following circumstances.

1. The machine has been used for more than 3 months
2. the machine ejected foam state has been poor (foam for the state of diarrhea or not rich foam).

Maintenance method:

Use up the hand sanitizer in the bottle, and pour in warm boiled water (warm boiled water has a better way to dissolve the pipe viscosity) After reaching the engine, reach out to the foam in the induction area pipe and then continue to extend it. Repeat the operation until it is warm enough to repeat the operation for many times.

3. This product is not waterproof. If it needs to be cleaned, it is recommended to use it in the off state
4. If the product is not used for a long time, please take out the battery